

Safe & Efficient Restroom/Locker Room Cleaning

Equipment Needed

Broom	Rags
Mop	Dust Cloth
Bucket	Duster with Extension
Paper Products	Spray Equipment
Rubber Gloves	Swabs
Safety Glasses	Wet Floor Sign

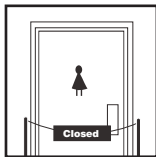


Chemicals Needed

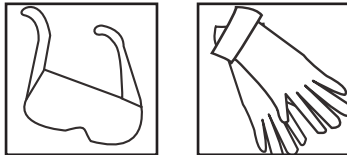
Ecolution Disinfectant	Disinfectant Cleaner
Ecolution Pro Bath & Bowl Cleaner	Bowl Cleaner/Soap Scum Remover
Ecolution Pro Glass Cleaner	Glass Cleaner

Procedure

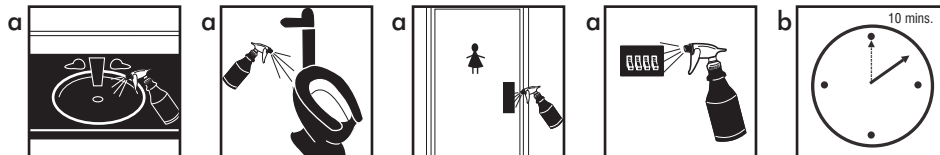
Step 1: Close restroom/locker room to general use.



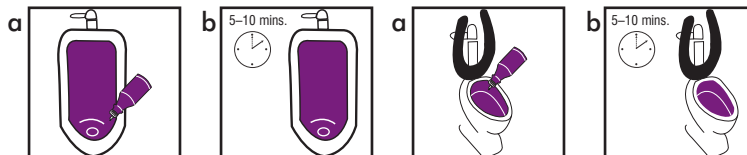
Step 2: Personal safety. Put on safety glasses and gloves.



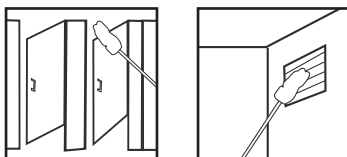
Step 3: Spray Ecolution Disinfectant on all surfaces (a)(countertops, sinks, outside of urinals and toilet bowls, fixtures, doorknobs, doors, light switches, wall), which needs a contact time of 10 minutes to kill germs and bacteria (b).



Step 4: Apply Ecolution Pro Bath & Bowl Cleaner in quart bottle with squirt nozzle to inside of urinals and toilet bowls (a), which needs 5–10 minutes contact time to dissolve soap scum (b).



Step 5: Dust. Start with the ceiling and work down. Use a duster with an extension handle to clean areas which cannot be reached by hand, including the tops of partitions, ceiling vents and ledges.



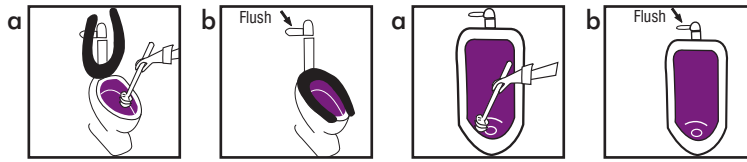
World Headquarters • 3100 Hamilton Ave. • Cleveland, OH 44114 • To order call: 1-866-747-2229

90R10
LIT800532

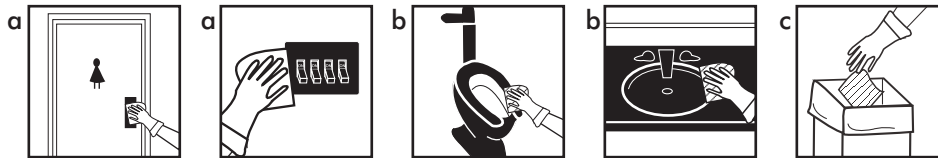
© Copyright 2009 — State Industrial Products Corp.

Safe & Efficient Restroom/Locker Room Cleaning

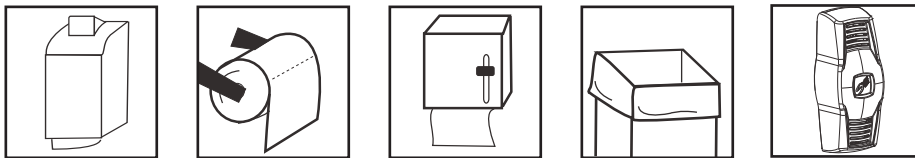
Step 6: Scrub insides of urinals and toilet bowls, which have been in contact with Ecolution Pro Bath & Bowl Cleaner. Scrub above and below the water line to eliminate any water rings (a). Flush toilets and urinals (b).



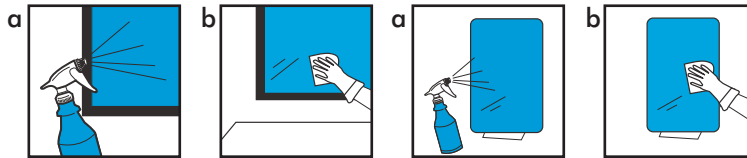
Step 7: Wipe off Ecolution Disinfectant. Starting in the area immediately to the right of the doorway and working to the right until the end point, wipe contact surfaces sprayed with Ecolution Disinfectant (a)(countertops, sinks, outside of urinals and toilet bowls, fixtures, doorknobs, doors, light switches, walls) with a cotton rag or swab. Wipe toilet seats and faucets with a disposable paper towel (b). Place paper towel in the trash (c).



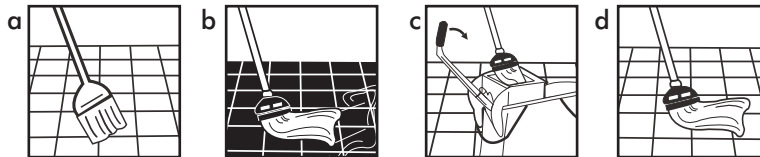
Step 8: Empty trash and restock items such as hand soap, toilet tissues, paper towels, trash liners, facial tissues, urinal blocks, sanitary napkins and air freshener.



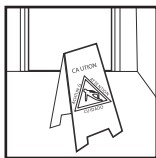
Step 9: Clean mirrors and chrome. Spray **Ecolution Pro Glass Cleaner** on mirrors and chrome equipment (a), and wipe off with a paper towel (b).



Step 10: Clean floors. Sweep floor (a), and then mop with the **Ecolution Disinfectant** solution (b). Wring mop out completely (c) and use it to dry floor (d).



Step 11: Place a wet floor sign if applicable.



World Headquarters • 3100 Hamilton Ave. • Cleveland, OH 44114 • To order call: 1-866-747-2229

90R10

LIT800532

© Copyright 2009 — State Industrial Products Corp.